

# 2021/2022

## REPORT TO THE COMMUNITY



Wheatland Crisis Society

# WCS 2021/2022

---

COVID-19 exacerbated a shadow pandemic of domestic abuse and the number of individuals in crisis.

Like many other services, WCS has been under unprecedented amounts of various challenges to stay open and remain a safe harbour for those who sought out the shelter for safety and relief from unrelenting abuse. Thanks to community support and all the amazing staff at WCS, we are proud to say we have persevered through and in our 2021/2022 fiscal year we helped 176 people interrupt the cycle of abuse.

This pandemic has reminded us of how interdependent we are and just how much we value and appreciate our community support. As we move forward with determination and re-imagine what our society could and should be, WCS is committed to providing innovative programs to assist everyone experiencing domestic violence. While we continue to prioritize the health and safety of our clients, we are excited to cultivate new relationships and partnerships with all the communities around us to further our reach and help all those in crisis. We look forward to connecting with you at community events and learning about your stories of resilience and how we can expand our reach to better assist those in their journey.

You will find multiple client quotes in this years Report To The Community to show examples of our impact.

Thank you for your continued support, and we look forward to working with you in 2022/2023.

The WCS Board of Directors & Staff

**resilience**  
*adjective*

"an ability to recover from  
or adjust easily to  
misfortune or change"





# WHO WE SERVE



WE ARE ONE OF THE FEW SHELTERS THAT WELCOME ALL INDIVIDUALS EXPERIENCING ABUSE REGARDLESS OF GENDER IDENTITY OR GENDER EXPRESSION. THIS INCLUDES, BUT IS NOT LIMITED TO, INDIVIDUALS WHO IDENTIFY AS MALE, GENDER FLUID, NON-BINARY OR FEMALE.

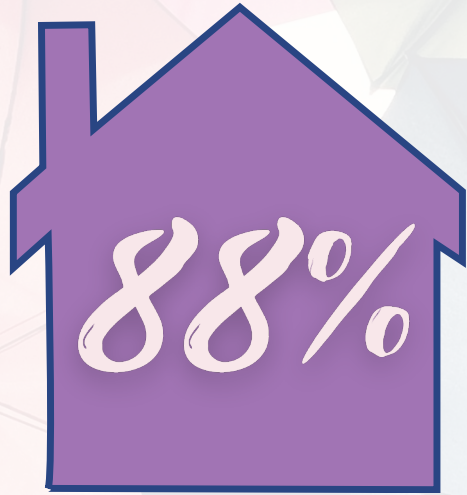
WCS Outreach & Public Education Programs serve over **20** communities!

The WCS Emergency Shelter Program is available to those fleeing abuse regardless of their geographic location

Strathmore, Gleichen, Siksika, Cluny, Rockyford, Standard, Rosebud, Drumheller, Three Hills, Acme, Carbon, Linden, Beiseker, Irricana, Kathryn, Chestermere, Langdon, Indus, Carseland, Arrowood, Mossleigh



# OUR IMPACT 2021/2022



**OF THOSE ACCESSING  
THE SHELTER WERE FIRST  
TIME USERS**

*These calls resulted in 30,099 minutes  
spent by Crisis Intervention Workers  
providing direct services*



— “

WCS has given me a chance to breathe, and  
that breath is finally fresh air.

” —

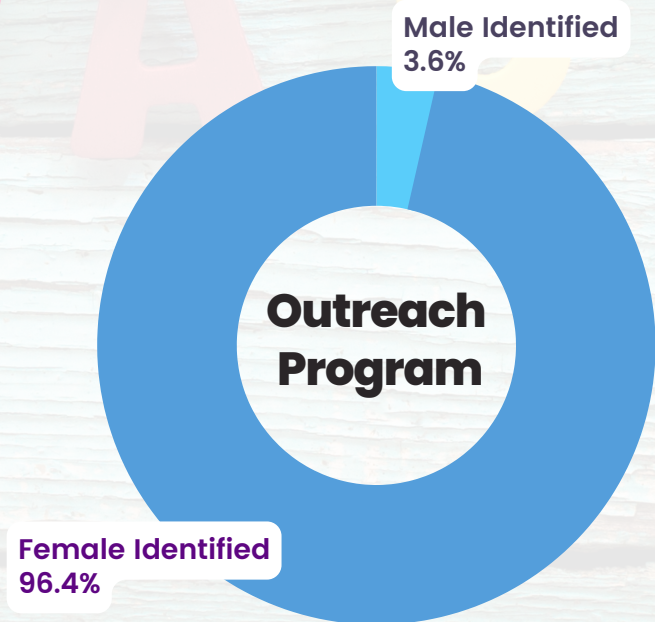
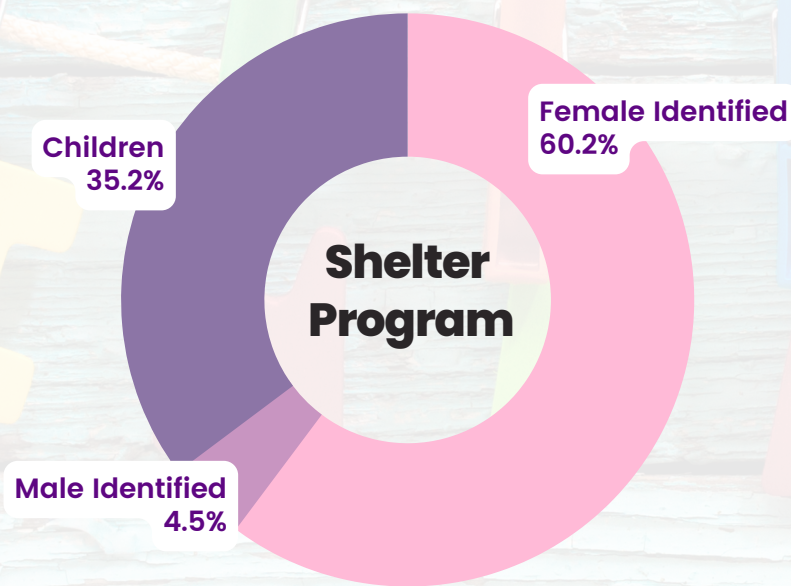




# OUR IMPACT 2021/2022

## COMMUNITY MEMBERS WHO COURAGEOUSLY SOUGHT SUPPORT

During 2021  
we've helped  
**176 PEOPLE**  
stop the cycle of  
Domestic Violence





# 2021/2022 CHILDREN'S PROGRAMS

**1601**

Hours of direct Child &  
Youth programming  
provided

**984**

Visits to the Child &  
Youth Program

— “

My time here was (overwhelming and humbling) and without this type of support I'm almost sure I would have been in a bad situation....

So, thank you very much.

People like you, helping people in need as I needed it, and helped me understand that not all times are good and that asking for help isn't weak, it's a must sometimes.

” —



# PANDEMIC RESPONSE 2021/2022

During the 2020-2021 COVID-19 Pandemic, the team at WCS continued to remain dedicated to helping all people experiencing abuse.

During the public health regulations in 2021, the capacity for The Wheatland Crisis Society was temporarily reduced to 50%.

March 7, 2022 The Alberta public health regulations were lifted, and our programs returned to full capacity.

The team at WCS is excited to get back to regular programming, where we can now offer our clients daily house meetings, groups, community lunch, yoga and much more.

What this means to us is we can continue to provide the services that are important to the community we serve while still keeping our clients and staff safe.

WCS would like to thank all staff for their flexibility as restrictions frequently changed throughout the pandemic.

## **WE ARE COMMITTED TO KEEPING EVERYONE SAFE BY ;**

- **Ensured testing is available on and offsite**
- **routine daily sanitation procedures on all high-touch surfaces**
- **Masks and PPE are still provided to all clients and staff as requested**
- **Clients positive for covid-19 will still be required to isolate for a minimum of 5 days based on vaccination status**
- **Continue the use of washable toys**
- **met & Exceeded all of AHS public health requirements**





# PROJECT IMPACT 2021/2022

In 2020, 21 shelters across the province were assembled by the Alberta Council of Women's Shelters to define and evaluate their impact and respond to what they discovered in the data.

***This research project found 7 key findings in the impact of the work that WCS does.***

These findings will be used to improve the way we collect data and statistics to help WCS, and shelters across the province achieve our goals, vision and mission.

- 1** Clients know self-care will keep them strong and help them through the difficult times. They will make time for themselves.
- 2** Clients have the tools that they need to help them to accept that it is okay to not be okay.
- 3** Clients are able to build a space where they can trust people to be kind and caring.
- 4** Clients learn to trust themselves to recognize and respond to the things that pose a threat to them.
- 5** Clients understand the importance of being and unconditional safe person for their children.
- 6** Clients have a network who support them and believe in them and they know they are resourceful and will seek help when needed
- 7** Clients have built a learned language of empowerment that they use to reframe lived experiences and shape who they are.

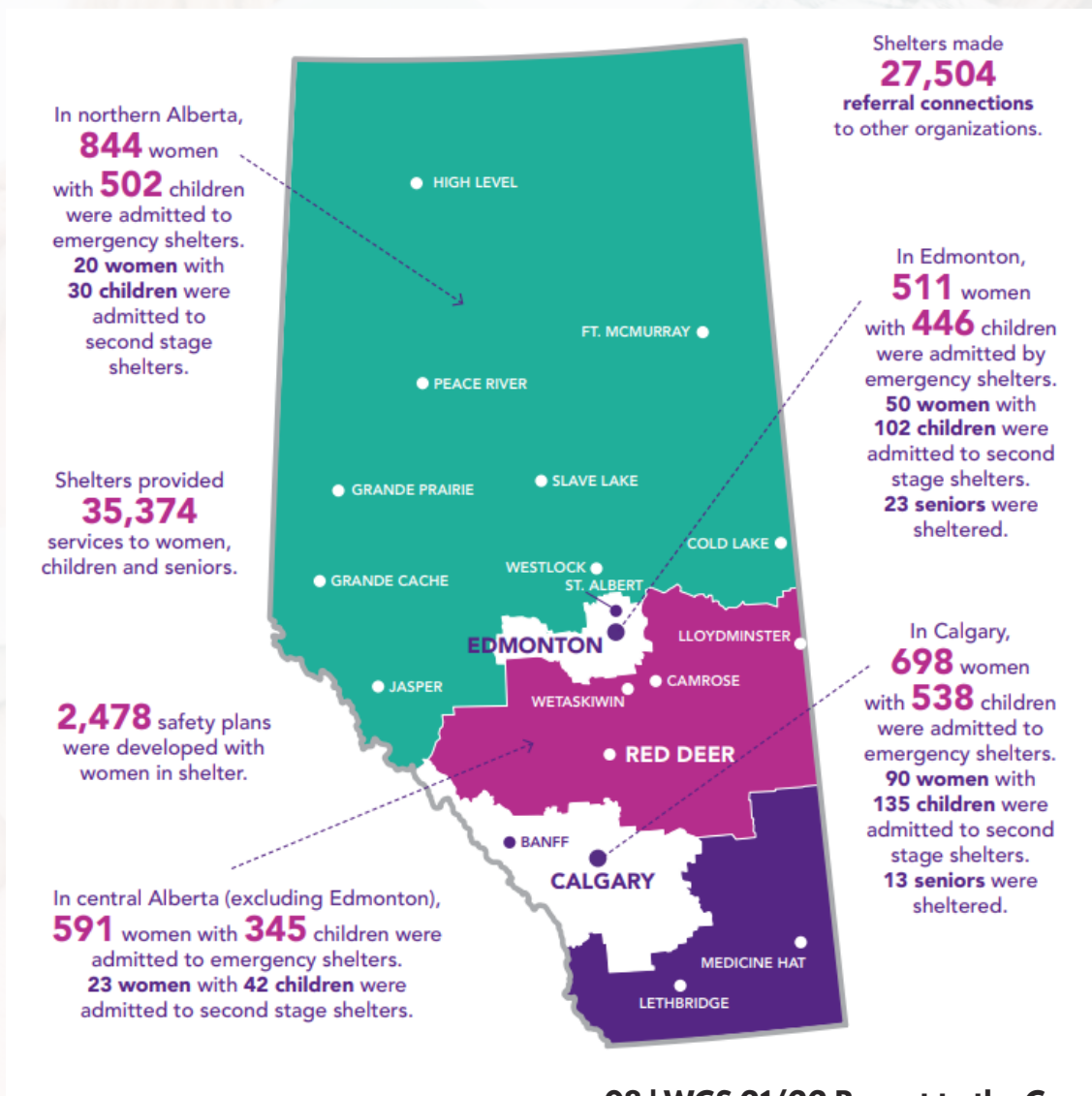




# PROJECT IMPACT 2021/2022

In 2021/2022 Shelters have persevered during the pandemic. These essential services did not close. Shelters have been striving to meet and exceed the public health guidelines, remaining open even as many other services and businesses were shuttered during the pandemic.

Despite the challenges COVID-19 posed for domestic violence shelters across the province, shelters remained open and continued to support communities. In 2020/21:



# WHAT WE DO 2020/2021

## WHAT OUR COMMUNITY MEMBERS WE HAVE SUPPORTED HAVE TO SAY

“

*I was able to take care  
of myself properly here;  
self-care*

”

“

**I am strong now,  
No one will ever  
hurt me again.**

”

“  
I know that you have  
helped set me free  
I'll take you with me every  
step of the way  
You will be with me every day  
I'll always have a place to belong  
I will never face anything alone  
because you will be cheering  
me on from back home.  
”

